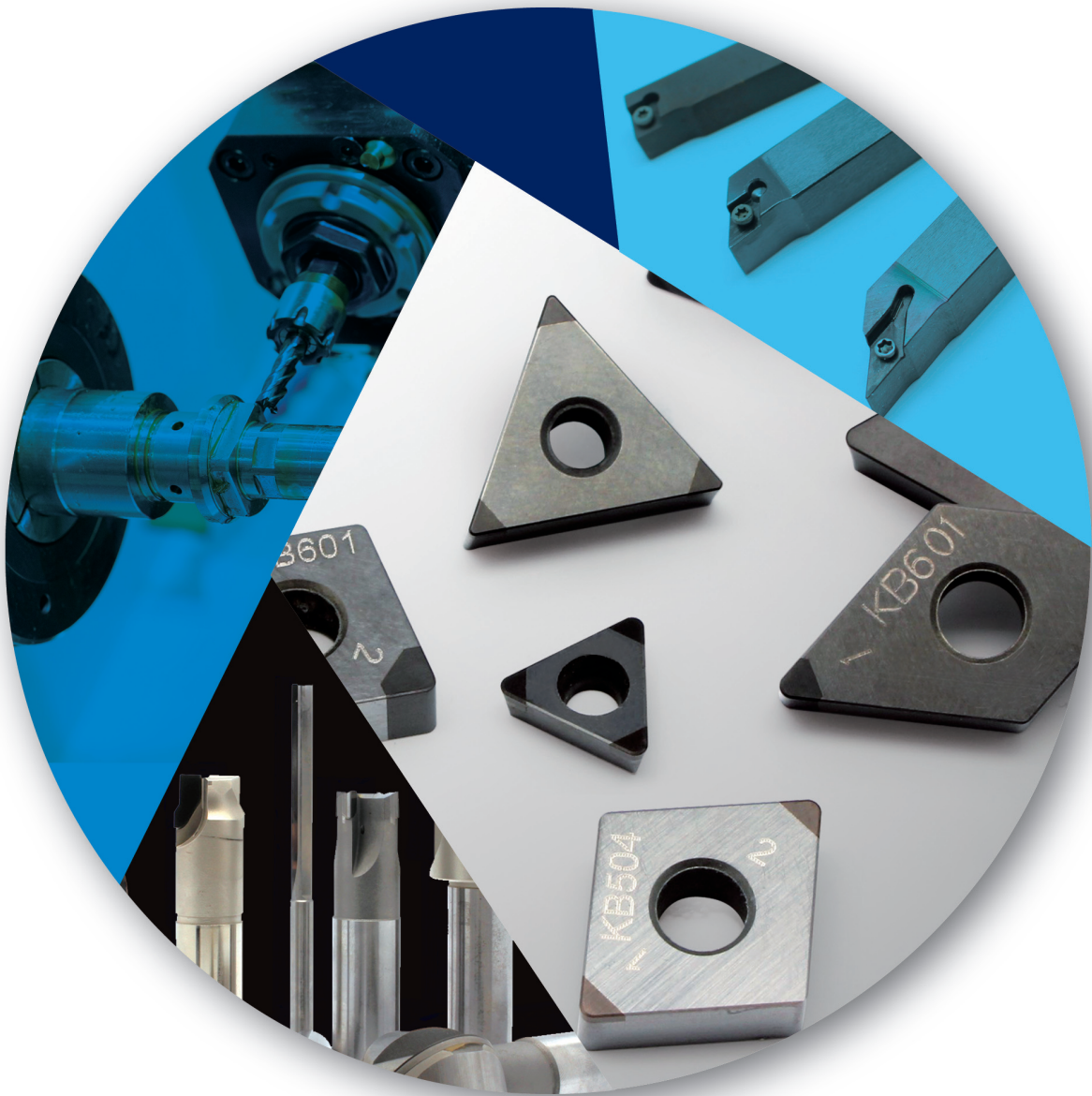


KOHER Total Line-up

PCD/CBN/Diamond Inserts
Carbide / PCD Rotating Tools
All kinds of Special Tools
Holder & Cutter

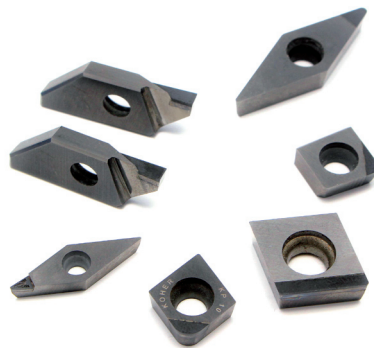


KOHER TOTAL LINE-UP



CBN Insert

- Various PCBN grade available
- Multi edge carbide-back and solid PCBN tipped
- For machining of hardened steel and cast iron, super alloy



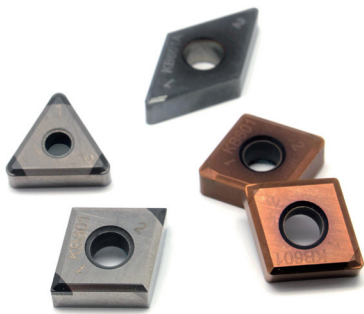
PCD Insert

- Various PCD grade available
- For machining of Non ferrous metal and non metal, titanium alloy and CFRP



MONO Insert

- Single crystal diamond
- for various mirror finishing
- Automotives wheel, DC motor commutator and most of precision component



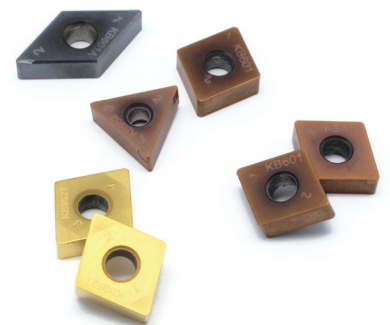
CBN Chipbreaker Insert

- Great chip control with good surface finish
- Suitable for hard-turning with long chip



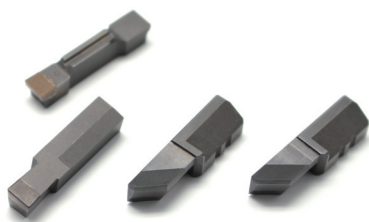
PCD Chipbreaker Insert

- Excellent surface finish with great chip control
- Various design prepared
- Customized available



Coated CBN Insert

- Significant heat resistance
- high speed machining of hardened steel
- AlCrN, AlTiN Multi layered and TiN coated



CBN Grooving Bite

- Automotive engine Valve seat and Gear part machining
- Customized available



Notch Bite

- Special design for Carbide rolls
- RCGX, RNMN Full top & Solid Insert
- Full top Notch bite



External Tool Holder

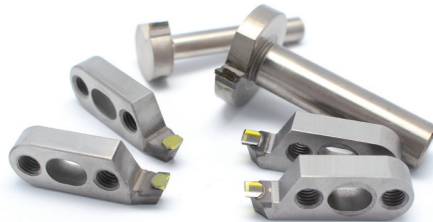
- Optimized for complex automatic lathe
- □0808, □1010, □1212
- Special ordermade available

PCD • CBN • Diamond Inserts / Carbide / PCD Rotating Tools
All kinds of Special Tools / Holder & Cutter



PCD Rotating tools - Automotives

- High performance with optimized design
- Carbide Solid & brazed shank available
- One step machining with multi cutting edge



Display Mirror Facing Tool

- TV, Monitor
- LGP with mono bite
- Order made with special design



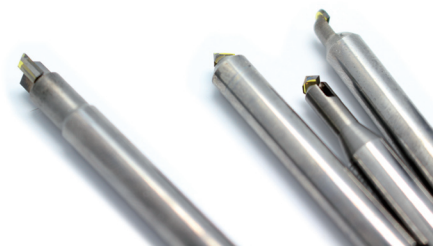
Carbide Rotating tools

- High quality of coated carbide
- Endmil, Drill & Reamer
- Standard & Special



PCD Rotating tools - Mobile phone

- For the machining of small component as like smart equipment
- Routing, grooving, chamfering



Mono Rotating tools - Mobile phone

- Single Crystal diamond tools for mirror facing
- Grooving & Chamfering tools
- Special order made design for machining Mobile parts; phone case, button & lens



PCD Wood working tools

- Furniture machining
- Special design



Ophthalmic Lens tools

- Natural Diamond Insert

- R1.0 / 2.0 / 3.0
- PCD Cutter with carbide shank
- MEI Machine tool



Contact Lens tools

- Natural & Mono Diamond
- RGP Lens, IOL and Mold machining



Milling Cutter

- Face milling cutter and PCD and PCBN insert
- Aluminum cutter
- Indexable Endmill Cutter
- Special tools

The KOHER Company Identity Symbol represents Korea,
the hub of Northeast Asia, spreading out to the world with 4 ways



Courage to
challenge



Creative
spirit



Faith & Trust
in Humanity



Honesty



Headquarter

103ho, Jungjingong POST-BI Center, 64 Yeonsuwon-ro, Danwon-gu, Ansan -si, Gyeonggi-do, Korea 15432

Factory / R&D Center

104ho, Jungjingong POST-BI Center, 64 Yeonsuwon-ro, Danwon-gu, Ansan -si, Gyeonggi-do, Korea 15432

Tel : (82) 70-4238-0909 Fax : (82) 31-495-5978

Web : www.kohertech.com SNS : www.facebook.com/kohertech

China Branch

Adress: #319, Liaobang Rd, Tongli Towm, Wujiang District, Suzhou City, Jiangsu Prov, China

Tel: 86-512-63939512

Germany Branch

Donatusstr. 32 D-50259 Pulheim, Germany